



Plate 4.1 Photograph of the convex surface of a whole sagittal otolith from a large *Acanthopagrus butcheri* (T.L. 412 mm) NB. Opaque zones are almost indistinguishable due to the thickness of the otolith.

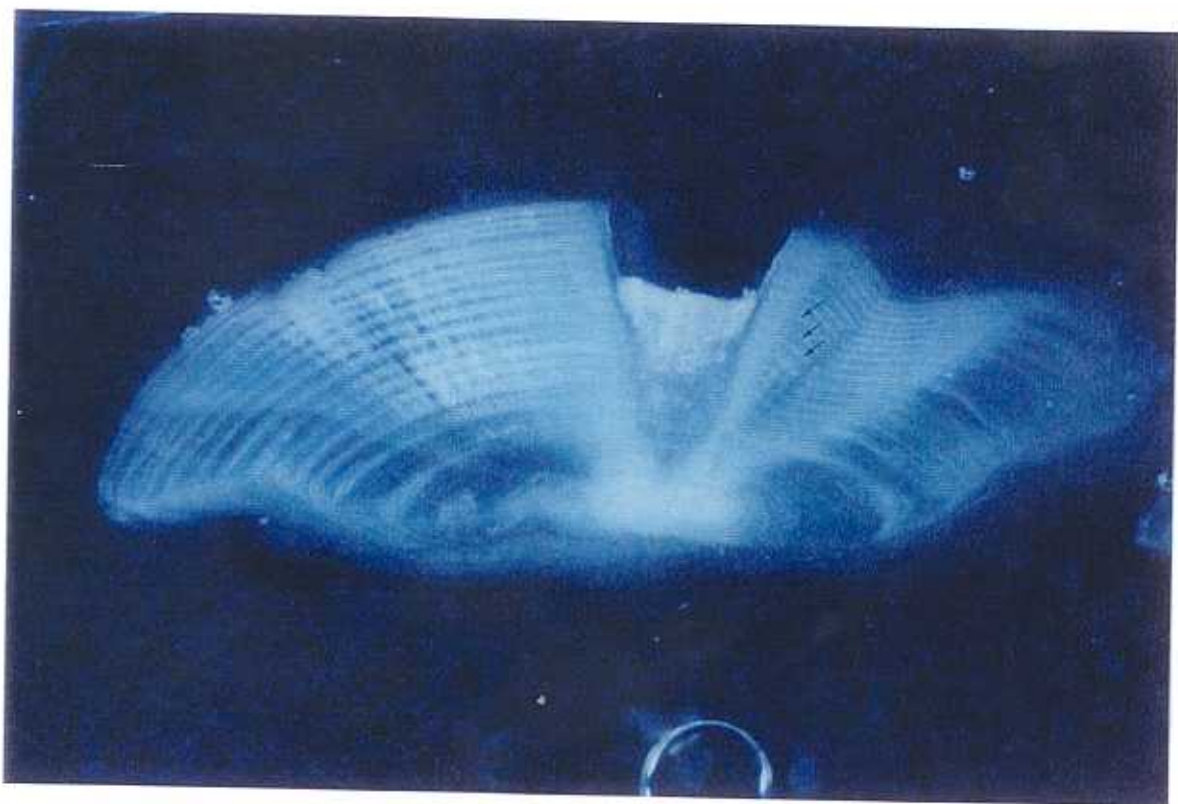


Plate 4.2 Photograph of a transverse section of the above otolith. NB. The numerous opaque zones (see arrows for examples) are clearly visible.



Plate 4.3 Photograph of a whole sagittal otolith from a juvenile *A. butcheri* (T.L. 104 mm)
NB. No opaque zones are present.



Plate 4.4 Photograph of a whole sagittal otolith of *A. butcheri* (T.L. 210 mm) with two opaque zones (shown by arrows).